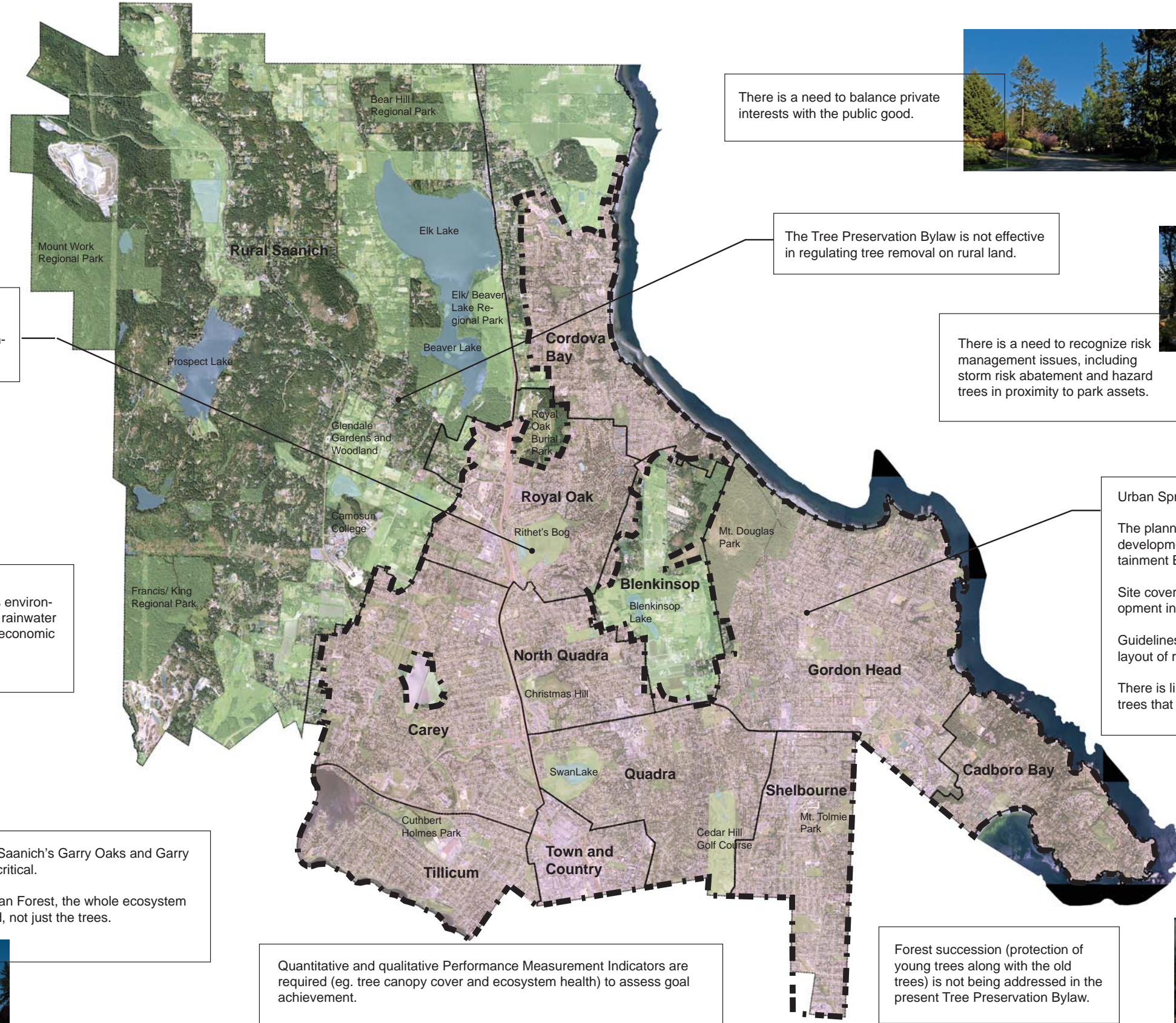


What are some of the Issues and Opportunities identified to date?



There must be clear lines of communication between municipal departments regarding tree protection and management.



There are opportunities for community stewardship (role of homeowner, continuation of volunteerism into the future).



The value of the Urban Forest includes environmental benefits (carbon sequestration, rainwater management, and ecosystem health), economic benefits (...) and social benefits (...).

Proper tree planting aftercare in a healthy growing medium is critical to tree survival.

The importance of Saanich's Garry Oaks and Garry Oak Ecosystem is critical.
In planning the Urban Forest, the whole ecosystem must be considered, not just the trees.



Quantitative and qualitative Performance Measurement Indicators are required (eg. tree canopy cover and ecosystem health) to assess goal achievement.
There is concern over a reduction in forest biomass (Saanich lost 12.6% in tree cover density between 1986 and 2005, per the *Urban Forest Canopy Cover Mapping and Analysis in the CRD, 2008 - HAT and UFS*).

There is a need to balance private interests with the public good.



The Tree Preservation Bylaw is not effective in regulating tree removal on rural land.



There is a need to recognize risk management issues, including storm risk abatement and hazard trees in proximity to park assets.



Urban Sprawl:
The planning of the Urban Forest is integrally linked with development patterns, increased density, the Urban Containment Boundary and designated Rural areas.
Site coverage requirements (incl. Sub-surface) in development infill sites leaves little space for planting trees.
Guidelines are required for planting trees in relation to layout of roads, bike lanes, and utilities.
There is limited flexibility in current regulations to save trees that are within building footprint / driveway layout.

Threats to Saanich's healthy Urban Forest include:

- urban sprawl,
- climate change,
- competition with utilities,
- homeowner attitudes and
- invasive species. Invasive species are of particular concern in Saanich.



Forest succession (protection of young trees along with the old trees) is not being addressed in the present Tree Preservation Bylaw.