

RAMBLER RD.

SUTCLIFFE RD.

PROJECT DATA

Civic Address: 941 Sutcliffe Road
Legal Description: Lot 1, Plan 7684, Section 31, Lake District
Zoning: RS 18 Proposed - P-4

Site Area: ~6,005 m² (~64,640 sf)
Lot Coverage: Provided: ~25.7%
Impervious Surface Area: ~3,123m²
Open Space : Site Area ~4,392m² : 6,005m²

Building Area: Level One - ~1,555 m² (~16,740 sf)
 Level Two - ~ 280 m² (~3,015 sf)
 Total - ~1,835 m² (~19,750 sf)

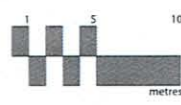
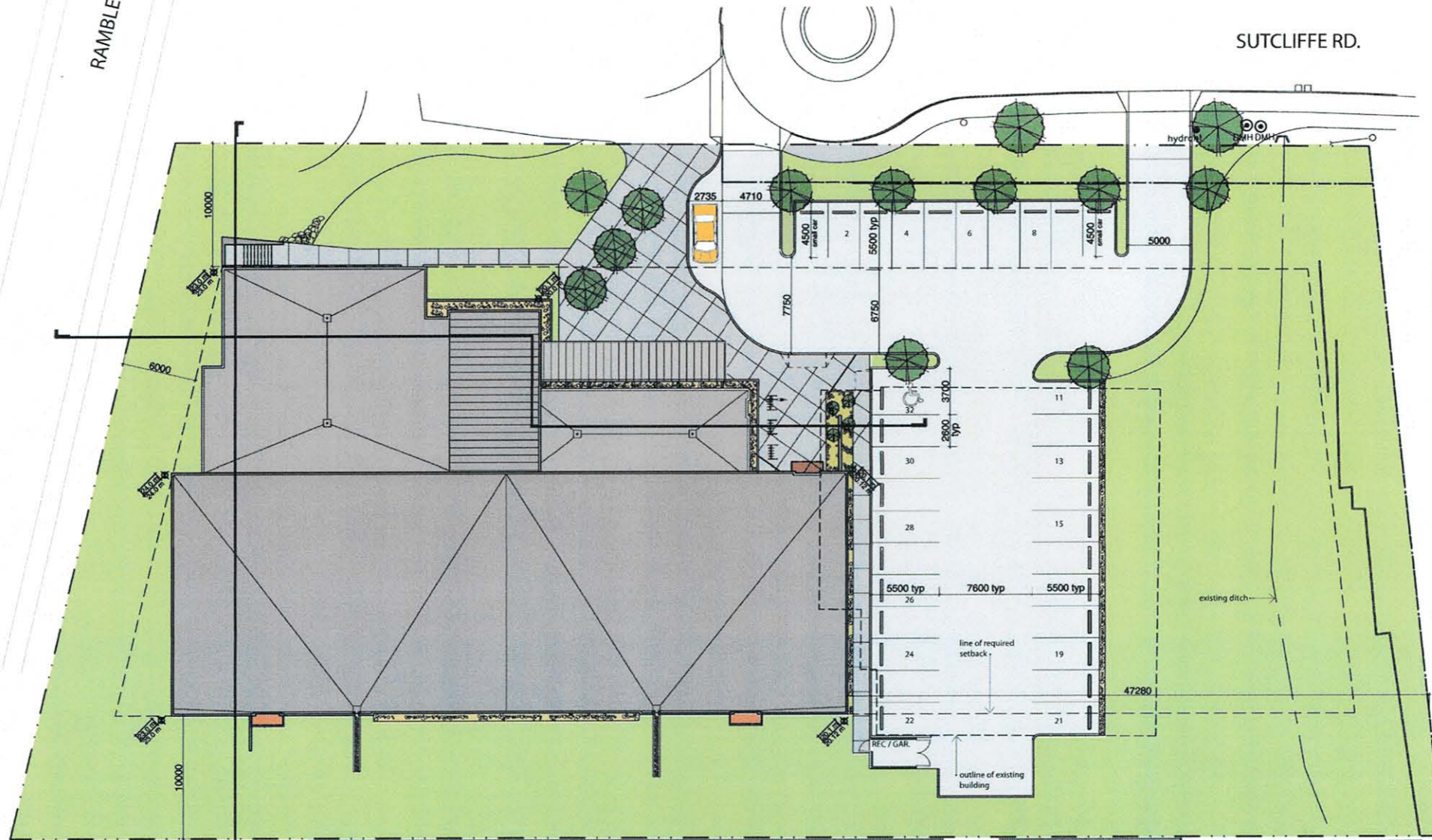
Building Height: 10 m (32.8 ft)

Average Grade: Point 1 (s-w corner) 23.0 m
 Point 2 24.0 m
 Point 3 23.0 m
 Point 4 20.0 m
 Point 5 20.12 m
 Point 6 20.12 m
 Total: 130.24 / 6 = 21.21 m

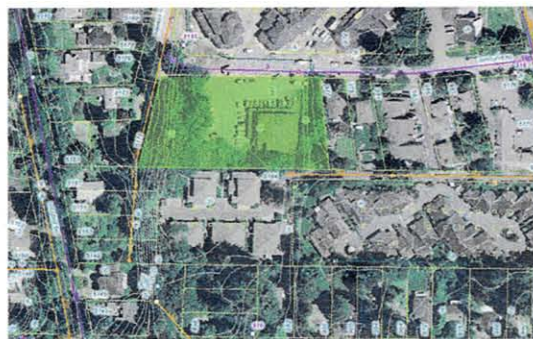
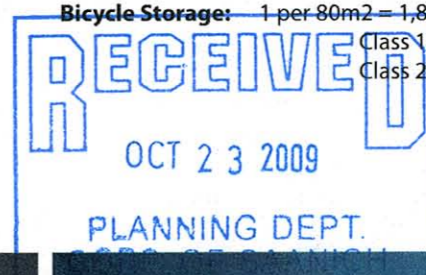
Building Setbacks:	Allowed	Provided
Front:	10.0 m (32.8 ft)	10.0 m (32.8 ft)
Rear:	10.0 m (32.8 ft)	10.0 m (32.8 ft)
Interior Side (e):	6.0 m (19.7 ft)	47.28 m (155.1 ft)
Interior Side (w):	6.0 m (19.7 ft)	6.0 m (19.7 ft)
Off Street Parking:	1.0 m (3.3 ft)	1.0 m (3.3 ft)

Parking:	Required	Provided
Multipurpose Area	- 1 sp/20m ² = 14	
Raquet and Ball Courts	- 2 sp/court = 14	
General Office	- 1 sp/25m ² = 2	
Required - 30		Provided = 32

Bicycle Storage: 1 per 80m² = 1,835 m² / 80 m² = 22.9 = 23
 Class 1: 20% x 23 = 4.6 = 5
 Class 2: 80% x 23 = 18.4 = 19



SITE PLAN
Scale 1:200



EXISTING SITE PLAN

