

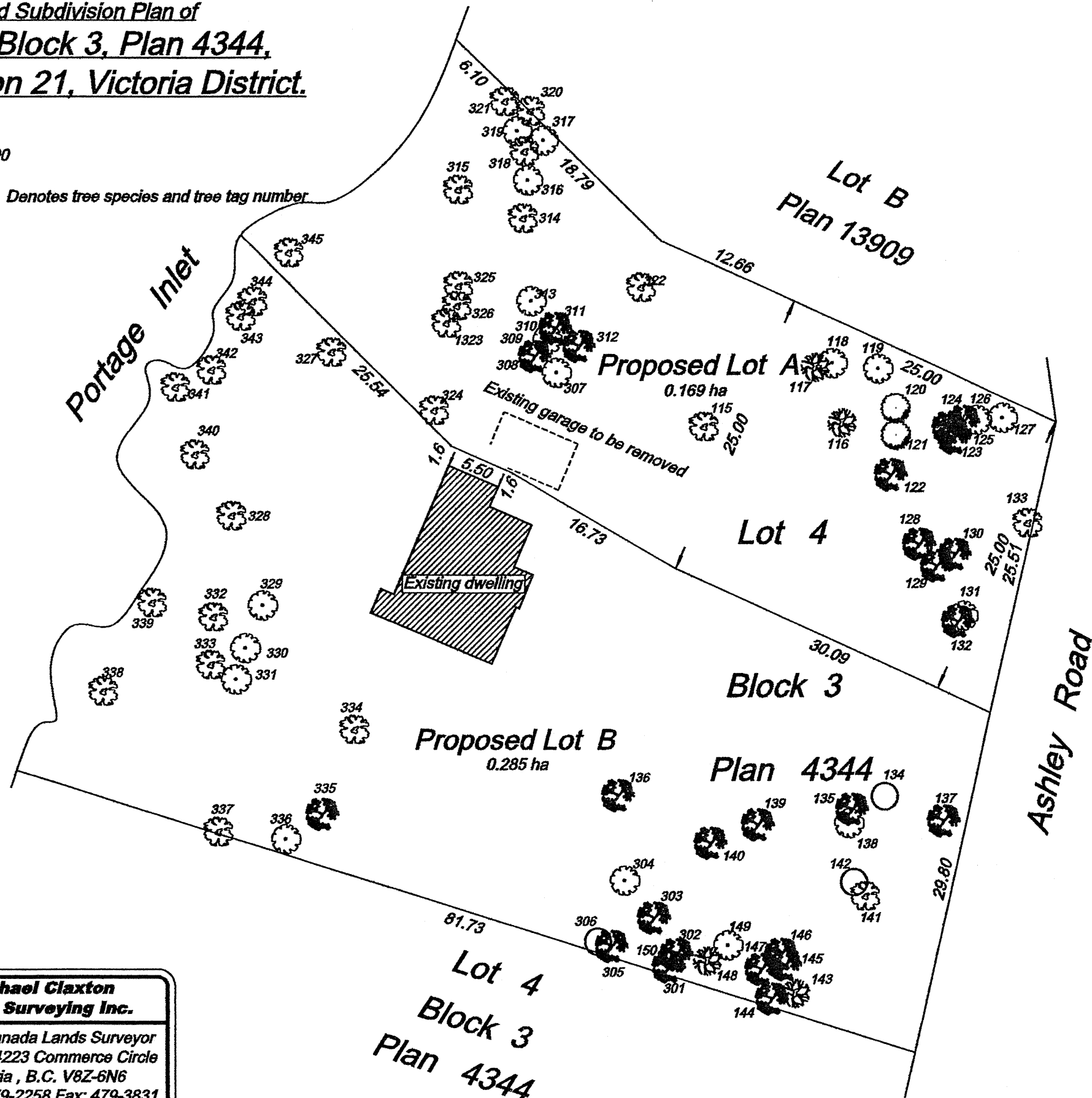
**B.C. Land Surveyor's
Proposed Subdivision Plan of
Lot 4, Block 3, Plan 4344,
Section 21, Victoria District.**

LEGEND

Scale 1:400



Denotes tree species and tree tag number

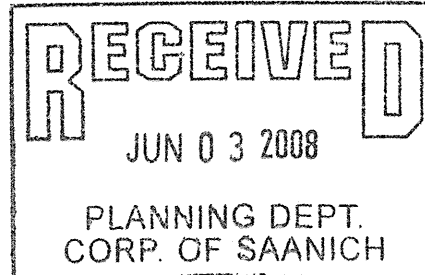


Tag Num.	Species	Diam.	Tag Num.	Species	Diam.
115	oak	0.15	305	arbutus	0.15
116	yew	0.2	306	pine	0.4
117	yew	0.15	307	fir	0.8
118	fir	0.4	308	arbutus	0.3
119	fir	0.4	309	arbutus	0.3
120	coniferous	0.4	310	fir	0.9
121	coniferous	0.6	311	arbutus	0.3
122	arbutus	0.3	312	arbutus	0.3
123	arbutus	0.2	313	fir	0.7
124	arbutus	0.1	314	oak	0.15
125	arbutus	0.1	315	oak	0.15
126	fir	0.3	316	fir	0.3
127	fir	0.3	317	fir	0.4
128	arbutus	0.2	318	oak	0.2
129	arbutus	0.3	319	fir	0.3
130	arbutus	0.3	320	oak	0.2
131	fir	0.3	321	oak	0.6
132	arbutus	0.15	322	oak	0.4
133	oak	0.3	324	oak	0.2
134	pine	0.4	325	oak	0.15
135	arbutus	0.1	326	oak	0.2
136	arbutus	0.25	327	oak	clump
137	arbutus	0.25	328	oak	0.15
138	fir	0.25	329	fir	0.9
139	arbutus	0.2	330	fir	0.3
140	arbutus	0.1	331	fir	clump
141	oak	0.2	332	oak	clump
142	pine	0.3	333	oak	clump
143	yew	0.1	334	oak	0.4
144	arbutus	0.2	335	arbutus	0.3
145	arbutus	0.3	336	fir	0.9
146	arbutus	0.2	337	oak	clump
147	arbutus	0.1	338	oak	clump
148	yew	0.2	339	oak	0.15
149	fir	0.25	340	oak	0.2
150	arbutus	0.15	341	oak	0.1
301	arbutus	0.2	342	oak	0.15
302	arbutus	0.15	343	oak	0.2
303	arbutus	clump	344	oak	0.2
304	fir	0.25	345	oak	0.2



**Michael Claxton
Land Surveying Inc.**
B.C. & Canada Lands Surveyor
Unit 80A 4223 Commerce Circle
Victoria, B.C. V8Z-6N6
Phone: 479-2258 Fax: 479-3831
File: 17459(Proposal).DWG

Drawn: April 29, 2008



Tree symbol	Tree species
	oak
	arbutus
	fir
	coniferous
	pine
	yew