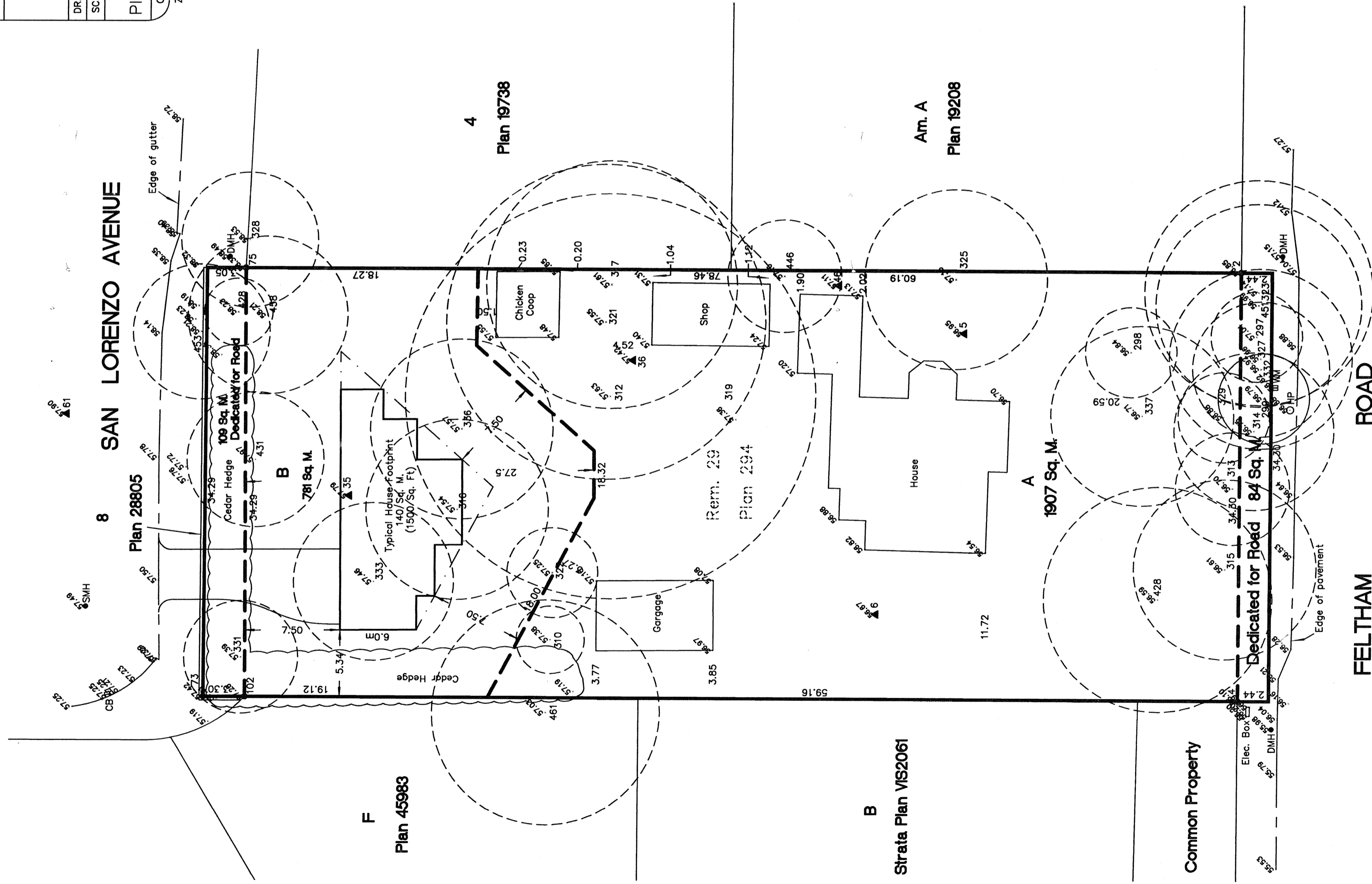


**WILLIAM DODDS**

**TENTATIVE SUBDIVISION**

DRAWN BY : RPH	PROJECT SURVEYOR : DRC
SCALE : 1:250	DATE : Oct. 28, 2008
Lot 29, Section 58, Victoria District, Plan 294, Except Parcel A (DD 2102681)	
OUR FILE : 25942	REVISION : Nov. 04, 2008
Z:\_Surveying\25942Dodds\25942tent.dwg	

Distances and elevations are in metres  
Elevations are geodetic, based on  
control monument 80H1509  
Lot dimensions are approximate, subject to  
verification by a legal survey  
Field survey completed October 14th, 2008



JEA Coord. No.	Tree Type	Tag No.	Trunk dia. (cm)	Protected Root Zone (rad. m)
26	Deciduous	315	40	7.2
27	Spruce	313	25	4.5
28	Fir	314	35	6.3
29	Fir	299	20	3.6
30	Fir	332	30	5.4
31	Fir	327	40	7.2
32	Fir	297	20	3.6
33	Fir	451	45	8.1
34	Fir	323	50	9.0
41	Fir	428	50	9.0
45	Pine	446	25	4.5
47	Deciduous	325	40	7.2
48	Deciduous	337	40	7.2
49	Deciduous	298	20	3.6
50	Deciduous	329	20	3.6
57	Fir	317	70	9.9
58	Maple	321	70	12.6
59	Deciduous	312	90	16.2
60	Deciduous	319	70	9.9
62	Fruit	333	35	6.3
63	Fruit	316	40	7.2
64	Fruit	336	40	7.2
66	Fruit	322	20	3.6
67	Fruit	310	15	2.7
70	Cypress	331	25	4.5
71	Pine	431	30	5.4
72	Fir	458	30	5.4
98	Birch Group	328	30	5.4
99	Decid. Group	453	30	5.4
100	Cedar	423	15	2.7
104	Deciduous	461	50	9.0

